



- Centara Hotels & Resorts**
- Bangkok: Centara Grand & Bangkok Convention Centre at CentralWorld
Sofitel Centara Grand Bangkok
 - Pattaya: Centara Grand Mirage Beach Resort Pattaya
 - Hua Hin: Sofitel Centara Grand Resort & Villas Hua Hin
 - Krabi: Centara Grand Beach Resort & Villas Krabi
 - Samui: Centara Grand Beach Resort Samui
Centara Villas Samui
Bhundhari Spa Resort and Villas Samui, A Centara Resort
 - Koh Pha-Ngan: Centara Pariya Resort & Villas Koh Pha-Ngan
 - Phuket: Centara Villas Phuket
Centara Karon Resort Phuket
Centara Kata Resort Phuket
 - Trat: Centara Chaa Talay Resort & Villas Trat
 - Hat Yai: Novotel Centara Hat Yai
 - Chiang Mai: Centara Duangtawan Hotel Chiang Mai
Siripanna Villa Resort Chiang Mai, Centara Boutique Collection
 - Mae Sot: Centara Mae Sot Hill Resort
 - Udon Thani: Centara Hotel & Convention Centre Udon Thani
 - Khon Kaen: Centara Hotel & Convention Centre Khon Kaen
 - The Maldives: Centara Grand Island Resort & Spa Maldives
 - India: Moksha Himalaya Spa Resort, Centara Boutique Collection

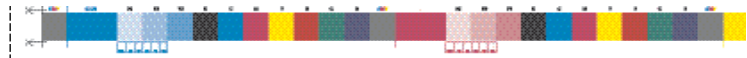
**CENTARA
GRAND
AT CENTRALWORLD**



www.centarahotelsresorts.com

Centara Grand at CentralWorld & Bangkok Convention Centre
999/99 Rama I Road, Patumwan
Bangkok 10330, Thailand
T +66 (0)2 100 1234
F +66 (0)2 100 1235
E cgcw@chr.co.th

Reservations
T +66 (0)2 100 1234 Ext. 6758-6762
F +66 (0)2 100 6161
E cgwreservation@chr.co.th
www.centarahotelsresorts.com
Represented by Utell International
Reservations Worldwide



Soaring above the skyline of the central business district and designed to resemble a flowering lotus, the 5 star Centara Grand & Bangkok Convention Centre at CentralWorld presents a fresh perspective on Thai hospitality and service. Easy access is available by car, coach and BTS Sky train which connects to the MRT Subway network. Rachadamri Road and Rama I Road link conveniently to other areas of the city centre and the inbound and outbound expressway.



- Job : Brochure
- Size : W 297 x H 210 mm
- Color : Full Colors
- Created by : Somsak S.
- Signature : Receiver
- Date :/...../.....





- Job : Brochure
- Size : W 297 x H 210 mm
- Color : Full Colors
- Created by : Somsak S.
- Signature : Receiver
- Date :/...../.....



Lifestyles on 26, located on the 26th floor, is Bangkok's most complete personal health, fitness and well being solution – a combination of state of the art fitness centre, swimming pool, tennis courts, juice bar, pool bar and Spa Cenvaree.

Individual health checks and lifestyle evaluations complement the professional team and advanced equipment.

An integral part of Lifestyle on 26, SPA Cenvaree employs age-old therapies along with the newest hydro facilities, an infrared sauna, science-based slimming technologies, an open-air sala and nail salon.

Providing the ultimate convenience for delegates, the hotel is sea lessly linked to the Bangkok Convention Centre itself.



P.4



P.1

- Job : Brochure
- Size : W 297 x H 210 mm
- Color : Full Colors
- Created by : Somsak S.
- Signature : Receiver
- Date :/...../.....



The hotel features as 505 luxury rooms including suites and 9 World Club floors. The exclusive facilities of the World Executive Club cover the entire 51st floor and provide a spacious lounge serving breakfast, afternoon tea and evening canapés and drinks. Internet services and private meeting rooms are available with butler service.

All guest rooms have individually controlled air-conditioning, separate bathrooms, high-speed internet access, satellite TV programme, PPV, games, radio and in-house music, mini-bar, refrigerator, safe box, smoke detector and sprinkler, IDD line telephone.

P.2



The 8 meticulously conceived restaurants and bars offer a world of dining choices.

Savour delicacies from all four corners of the world 24 hours a day at The World, experience a new take on the flavours of Asia at Ginger, or the very finest of steak house at 55, on the 55th floor, where you can dine in air-conditioned comfort or alfresco abandon while viewing the cityscape.

And of course, 24 hour in room dining is always available.



P.3

- Job : Brochure
- Size : W 297 x H 210 mm
- Color : Full Colors
- Created by : Somsak S.
- Signature : Receiver
- Date :/...../.....